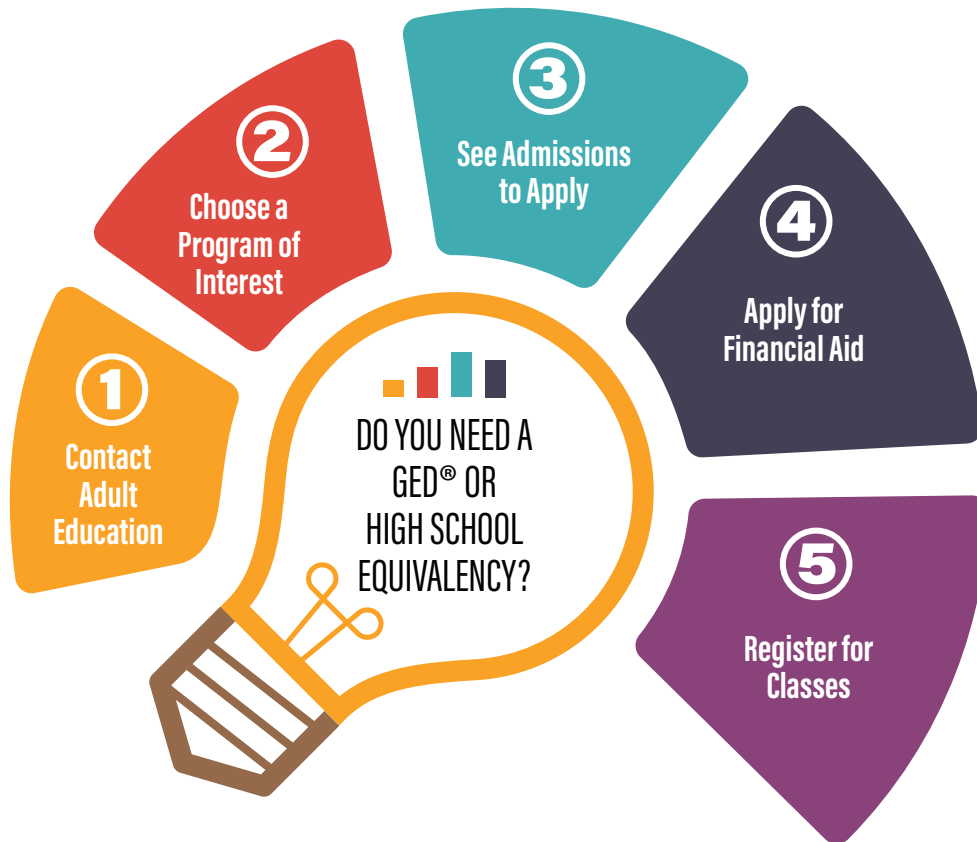


EVERYONE NEEDS A GED® OR HIGH SCHOOL EQUIVALENCY TO MAKE A LIVING WAGE

Albany Technical College Can Help with Joint Enrollment!



In today's world you are required to have a certain level of education. You can joint enroll in a program of interest while you work towards a GED®/High School Equivalency.

CONTACT ADULT EDUCATION

Start by contacting Jonita Coleman in the Adult Education Department for enrollment information at 229.430.7881 or jcoleman@albanytech.edu.

CHOOSE A PROGRAM OF INTEREST

Choose from 39 programs listed on the reverse side of this flyer.

SEE ADMISSIONS TO APPLY

Now that you have contacted adult education and decided on a program of interest, contact Admissions at admissions@albanytech.edu or call 229.430.3573.

APPLY FOR FINANCIAL AID

Upon completion of the admissions process, the next step is to apply for financial aid. You may be eligible for two types of financial aid, HOPE Grant and Pell Grant. Contact finaid@albanytech.edu or call 229.430.6159.

REGISTER FOR CLASSES

You have satisfied steps one through four as listed above, now it is time to register for classes so you can get started with a new career and make a living wage. Contact Kennosha Hawkins at khawkins@albanytech.edu or 229.430.6164 to register.

For additional information about Joint Enrollment options, call Adult Education at 229.430.7881

Students must be jointly enrolled and successfully earn a GED®/High School Equivalency in order to graduate from an ATC program.



39 PROGRAMS OF INTEREST

BUSINESS

Accounting
Business Healthcare Technology
Business Management
Business Technology
Marketing Management

COMPUTERS & ENGINEERING

Computer Programming
Computer Support Specialist
Cybersecurity
Design & Media Production Technology
Electronics Technology
Engineering Graphics
Networking Specialist

CONSTRUCTION & MANUFACTURING

Air Conditioning Technology
Building Maintenance
Carpentry NCCER
Electrical Construction
Industrial Electrical Technology
Masonry NCCER
Mechatronics Technology
Plumbing NCCER
Welding & Joining Technology

HEALTHCARE

Health Information Coding
Medical Assisting
Nurse Aide
Pharmacy Technology

LOGISTICS & OPERATIONS

Business Logistics Management
Industrial Operations Technician
Quality Assurance Specialist

PROFESSIONAL SERVICES

Cosmetology
Culinary Arts
Early Childhood Care and Education
Environmental Horticulture
Hotel, Restaurant & Tourism Management

PUBLIC SAFETY

Criminal Justice Technology
Fire Science Technology
Professional Firefighter

TRANSPORTATION

Auto Collision Repair Technology
Automotive Technology
Diesel Equipment Technology

Program information subject to change.

For additional information about Joint Enrollment options, call Adult Education at 229.430.7881